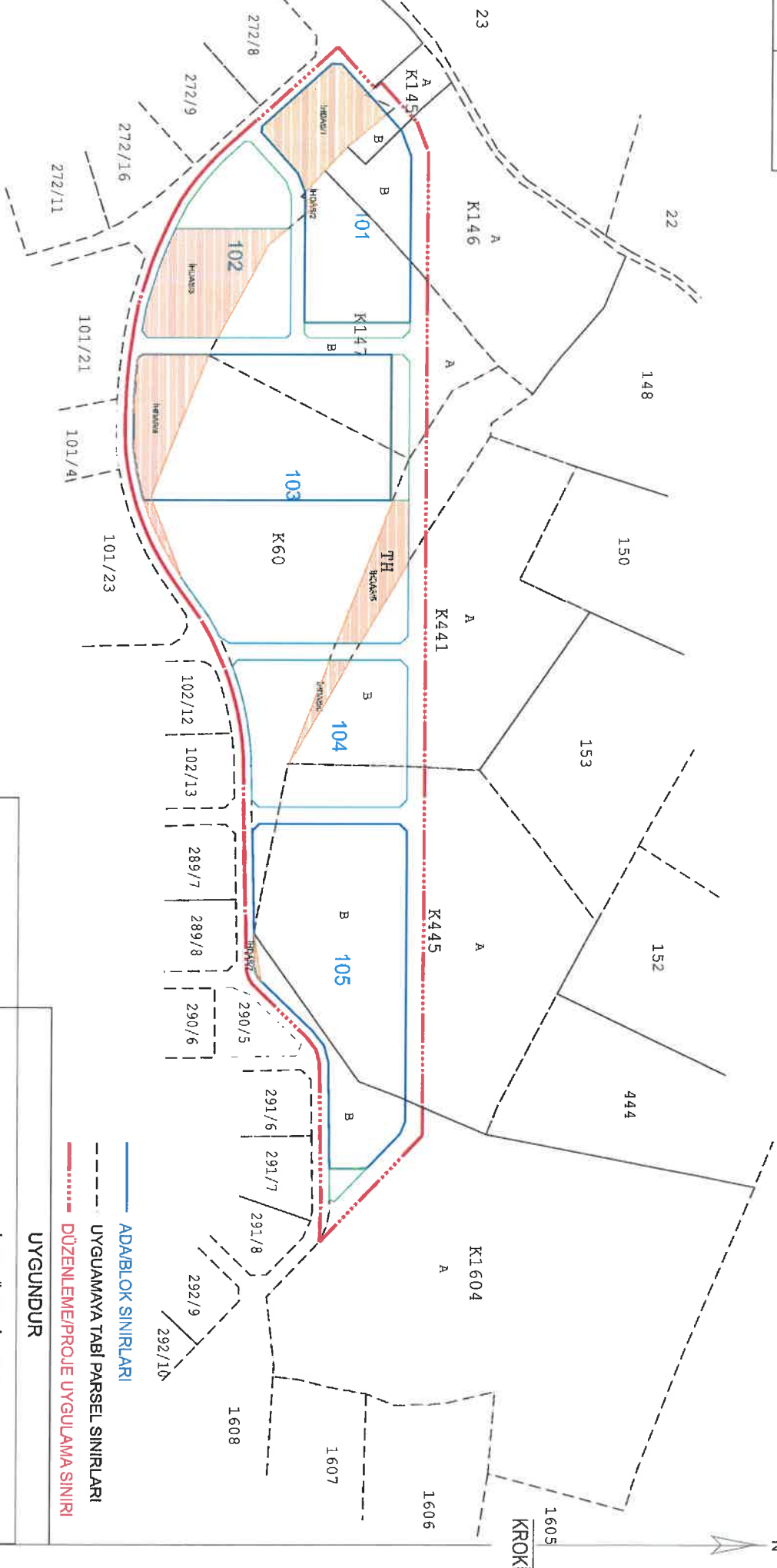


ENCÜMEN KARAR KROKİSİ

İL	GAZİANTEP
İLÇESİ	OĞUZELİ
MAHALLESİ	ÇANBAŞI
PARTE NO	N39D21A, N39D21B N39D16C
ADAPARSEL	80, 145, 146, 147, vs.



UYGUNDUR

BELEDİYE / ÖZEL İDARE

KONTROL EDEN ONAYLAYAN

ADI SOYADI

Tarih

İmza

[Signature]

KROKİ