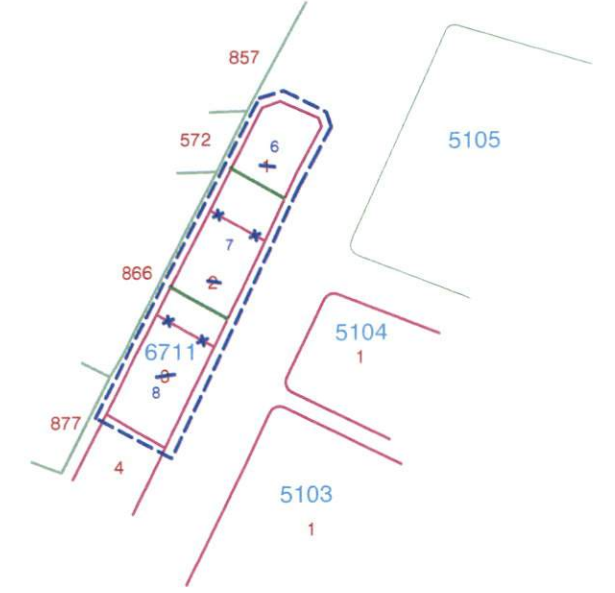
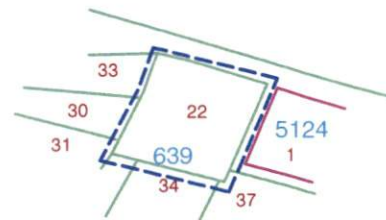


# ENCÜMEN KARAR KROKİSİ

İLİ :GAZİANTEP  
İLÇESİ :ŞEHİTKAMİL  
MAH :İNCİLİPİNAR-GÜZELYURT  
PAFTA : ---  
ADA :639-4742-6711  
PARSEL :22-5-1,2,3



----- DÜZENLEME SINIRI



  
H. Emre MERMİ  
Harita Mühendisi  
Oda Sicil No:13848